



**SATIN =**

**retains moisture  
in your hair,  
keeping it healthier, longer.**

# SATIN

## SCRUNCHIES

9 SIZES

MINI  
SCRUNCHIE



1cm

4cm

SKINNY  
SCRUNCHIE



0.8cm

5cm

SMALL  
SCRUNCHIE



1.1cm

5.5cm

MIDI  
SCRUNCHIE



1.8cm

7.5cm

REGULAR  
SCRUNCHIE



3.5cm

11.5cm



4cm

11.5cm

CLASSIC LARGE  
SCRUNCHIE 1



4cm

12cm

CLASSIC LARGE  
SCRUNCHIE 2



5.5cm

15cm

OVERSIZED  
SCRUNCHIE

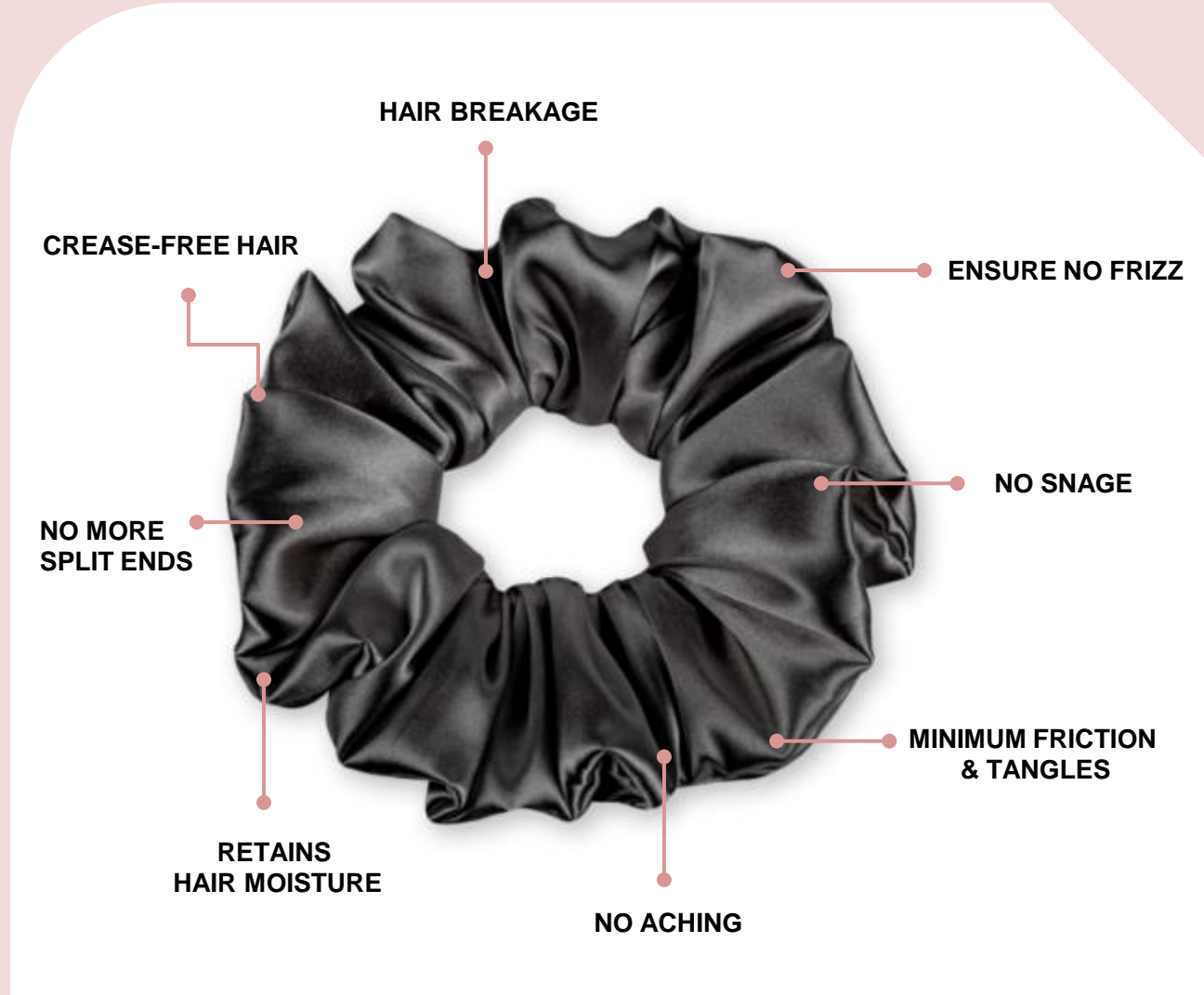


6.5cm

18cm

PILLOW  
SCRUNCHIE

# BENEFITS OF SATIN SCRUNCHIES



SATIN SWATCHES

# PATTERN SWATCH



P 1



P 2



P 3



P 4

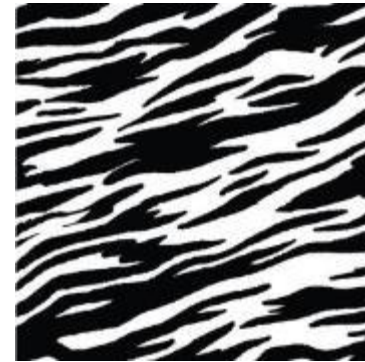
ETHNIC PRINT



P 5



P 6



P 7

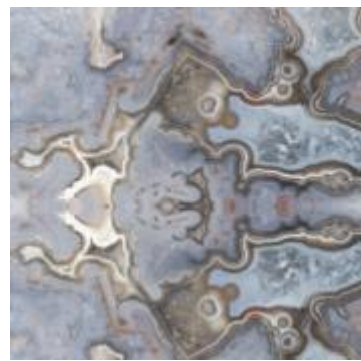


P 8

ANIMAL PRINT



P 9



P 10



P 11

TEXTURE NATURAL PRINT



P 12

# CLASSIC LARGE SCRUNCHIE



SIZE CUT: 4x42"+es7



1



2



3



4cm

12cm



4



5



6

# REGULAR SCRUNCHIE



SIZE CUT: 3.5 x 42" + es 7" (2 on)



7



8



9



10



11



12

# MIDI SCRUNCHIE



SIZE CUT: 2x35"+es7" (4on)



13



14



15



16

# SMALL SCRUNCHIE



SIZE CUT: 1.5x19 +es 6.5" (6on)



17



18



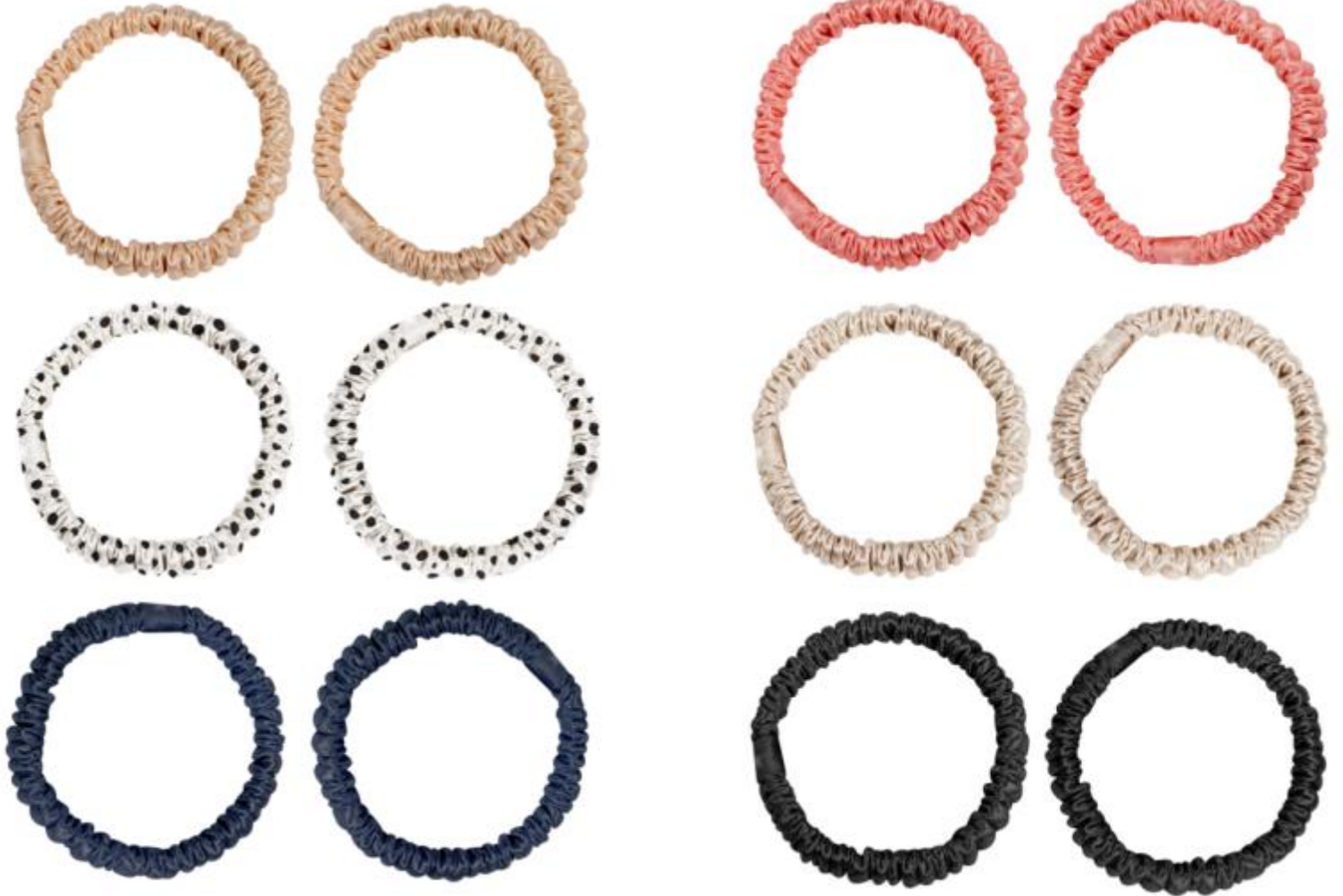
19



# SKINNY SCRUNCHIE



SIZE CUT: 1x19+es5.5" (6on)



20

21

# SKINNY SCRUNCHIE



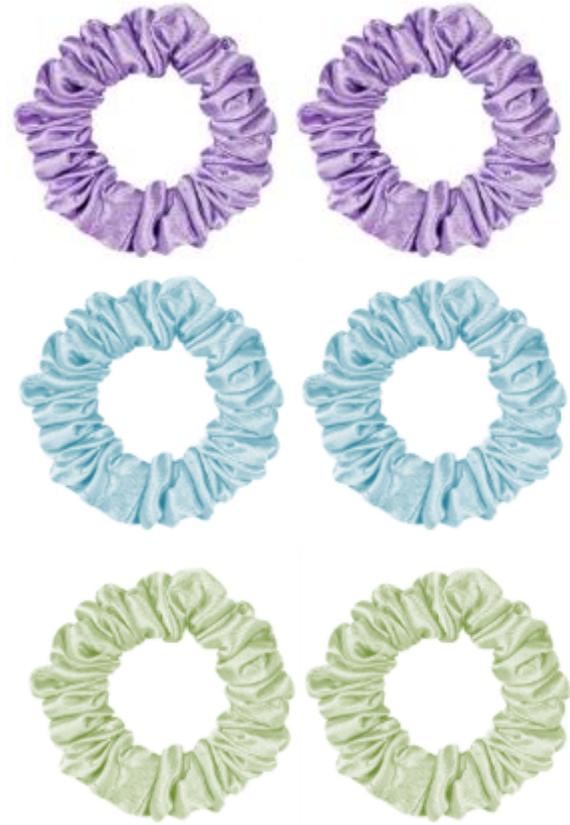
SIZE CUT: 1.25x20+es3" (6 on)



22

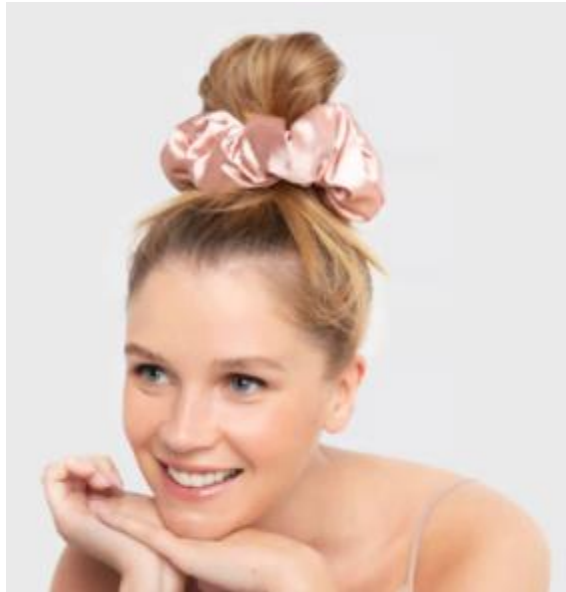


23



24

**PILLOW SCRUNCHIE &  
OVERSIZED SCRUNCHIE**



**25**



**26**

PILLOW SCRUNCHIE SIZE CUT: 6x42 +es7"(1on)



PILLOW SCRUNCHIE



OVERSIZED SCRUNCHIE



**27**

OVERSIZED SCRUNCHIE SIZE CUT: 5x42 +es7"(1on)

## HEADBAND



28



29



30



31

**HEADWRAP**



32



33



34



35



36



37